

Injection Date : Thu, 2. Nov. 2023 Seq Line : 34
Location : 20
Inj. Vol. : 2 µl

Acq. Method : C:\Users\Public\Documents\ChemStation\1\Data\SE02NOV 2023-11-02
14-31-42\22010446C LCMS-6#.M

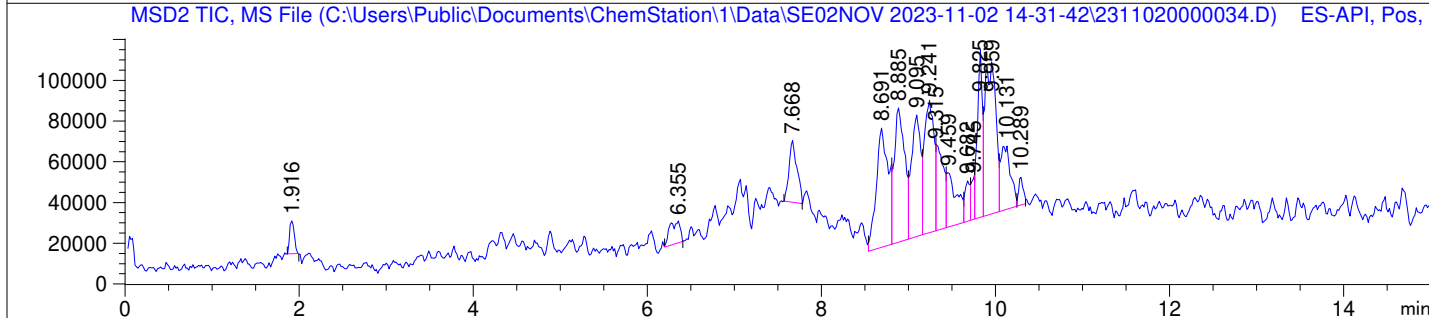
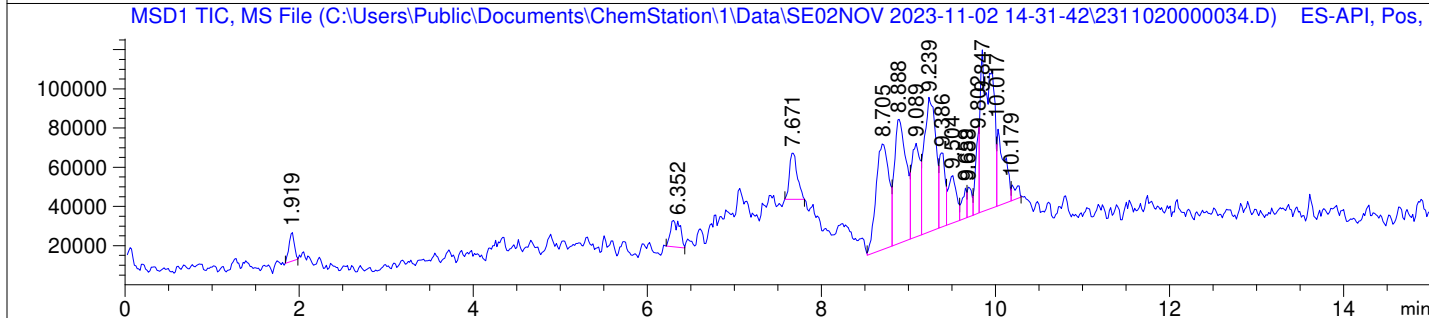
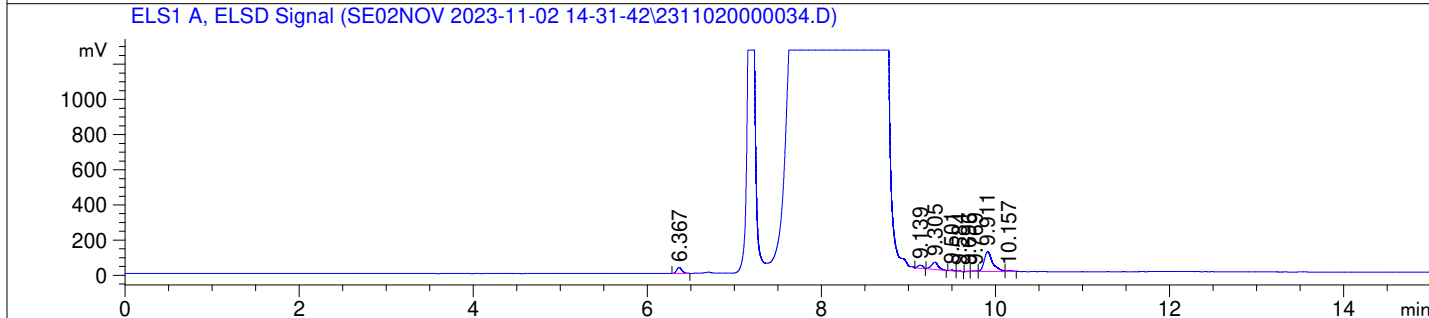
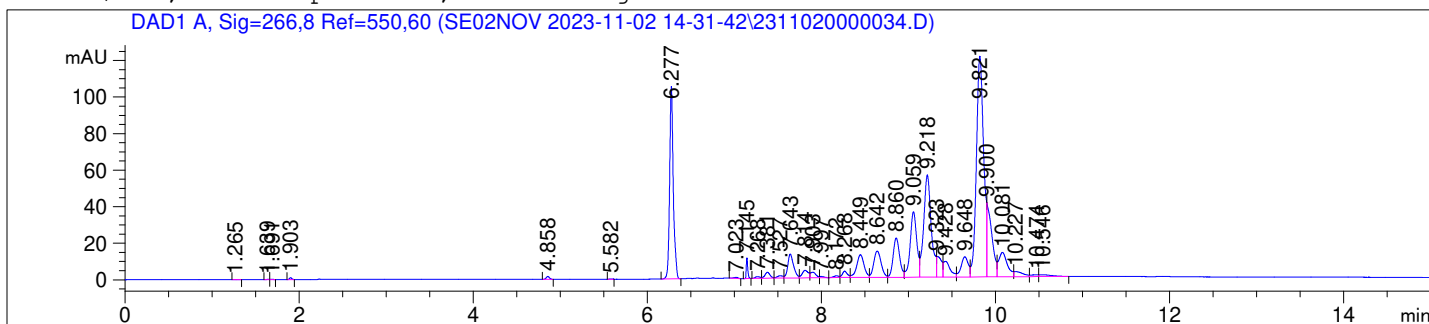
Analysis Method : C:\Users\Public\Documents\ChemStation\1\Data\SE02NOV 2023-11-02
14-31-42\22010446C LCMS-6#.M (Sequence Method)

Waters XBridge BEH Amide (4.6 x 150 mm, 2.5 µm); PN# 186006726

Mobile Phase A: 20mM Ammonium Acetate (aq) pH 8.2

Mobile Phase B: AcN

Mobile Phase A / Mobile Phase B: 5/95 (0 min) --> (10 min) --> 60/40 (5 min); Flow:
1.0 ml/min; MSD1 = positive; MSD2 = negative



DAD1 A, Sig=266,8 Ref=550,60

Peak #	Ret. Time [min]	Area [mV *s]	Area %
1	1.265	0.314	0.013
2	1.639	0.257	0.011
3	1.691	0.453	0.019
4	1.903	1.744	0.073
5	4.858	4.076	0.169
6	5.582	0.242	0.010
7	6.277	306.100	12.726
8	7.023	1.791	0.074
9	7.145	13.433	0.559
10	7.268	3.548	0.148
11	7.381	13.421	0.558
12	7.527	5.993	0.249
13	7.643	60.630	2.521
14	7.814	20.097	0.836
15	7.903	13.493	0.561
16	7.997	2.248	0.093
17	8.172	3.911	0.163
18	8.268	14.357	0.597
19	8.449	73.541	3.058
20	8.642	84.748	3.524
21	8.860	111.872	4.651
22	9.059	188.849	7.852
23	9.218	335.493	13.949
24	9.323	44.355	1.844
25	9.428	47.109	1.959
26	9.648	64.005	2.661
27	9.821	695.357	28.910
28	9.900	165.823	6.894
29	10.081	92.014	3.826
30	10.227	20.282	0.843
31	10.474	5.759	0.239
32	10.546	9.908	0.412

ELS1 A, ELSD Signal

Peak #	Ret. Time [min]	Area [mV *s]	Area %
1	6.367	135.957	10.807
2	9.139	71.538	5.687
3	9.305	219.262	17.429
4	9.501	14.376	1.143
5	9.584	8.502	0.676
6	9.696	7.600	0.604
7	9.769	21.645	1.721
8	9.911	760.595	60.459
9	10.157	18.549	1.474

